



KINSHOFER
crane and excavator attachments

DEMOLITION AND SORTING GRABS D-SERIES



D-Series with *HPXdrive* up to 40t



SAFETY:
VALVES

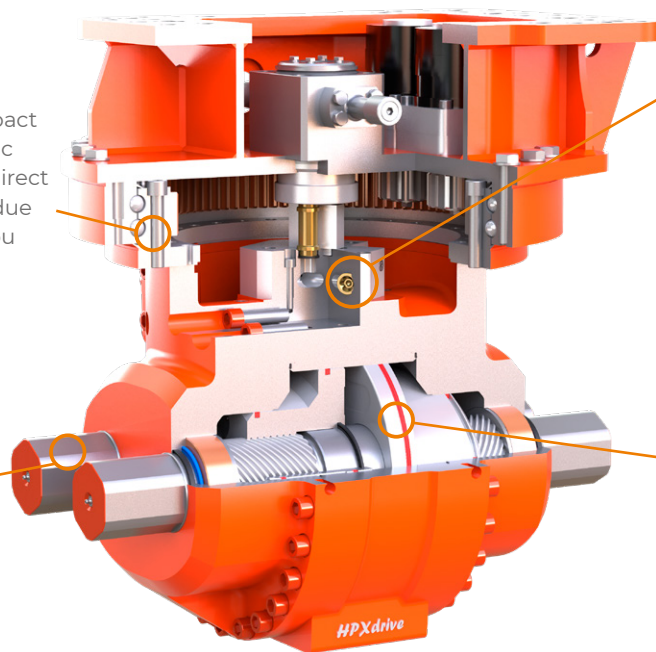
FUNCTION:
ONE UNIT

The Kinshofer rotation and the HPXdrive are forming one compact unit. There are no short hydraulic hoses necessary thanks to the direct connection. There are no leaks due to broken hoses possible and you can thus use the grab in water protection zones.

SHELL EXCHANGE SYSTEM:
SHAFT

By loosening the shell bolts, the shells can be exchanged. The drive unit itself remains untouched.

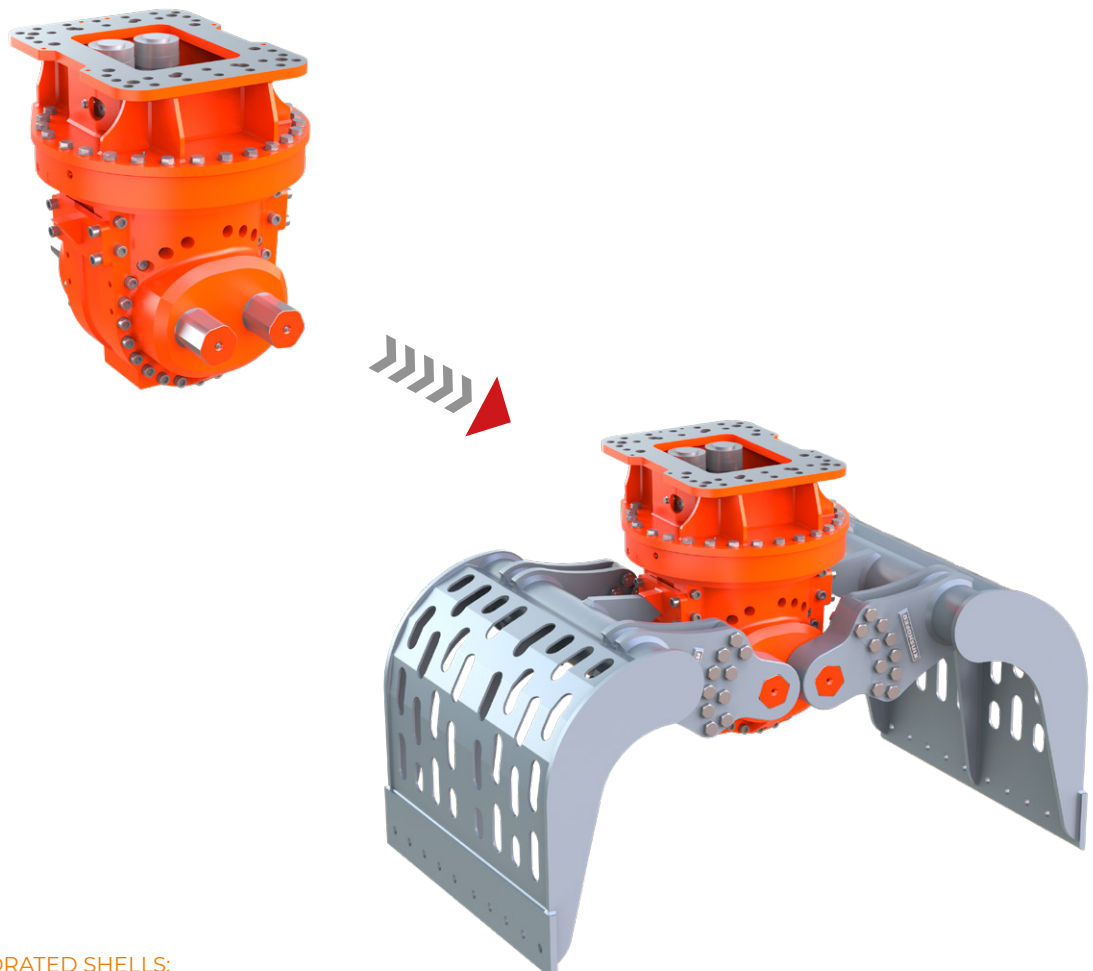
You can thus change e.g. to another width or shell version.



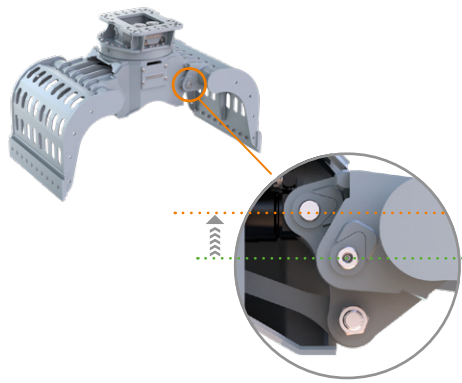
An integrated non-return valve guarantees the secure retention of loads.
The grab is maintenance-low as the drive unit itself has no grease points, saving time and consumables.

DESIGN:
SHAFT & PISTON

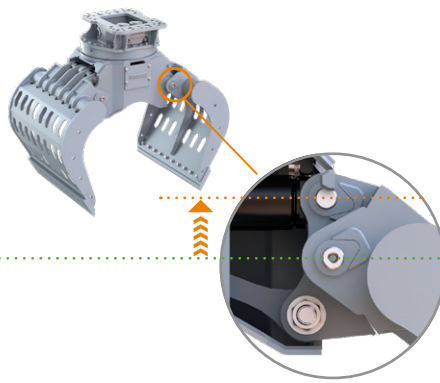
Absolute shell synchronisation without compensation rods.
The torque is generated by two pistons, which run opposed and have four helix threads.
The force is delivered to two shafts, on which the shells are mounted.



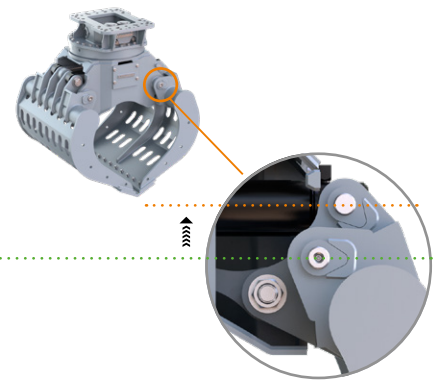
D27HPX WITH PERFORATED SHELLS:
DEMOLITION AND SORTING GRAB with HPXdrive



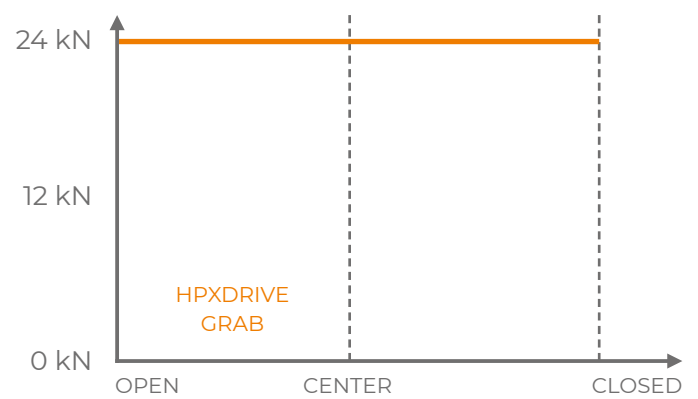
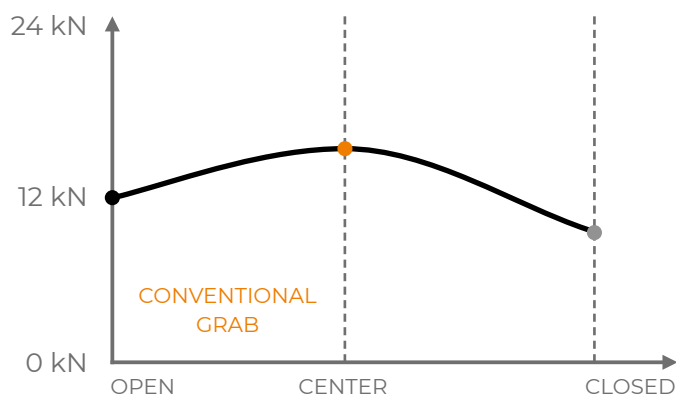
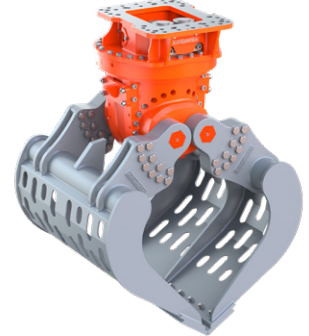
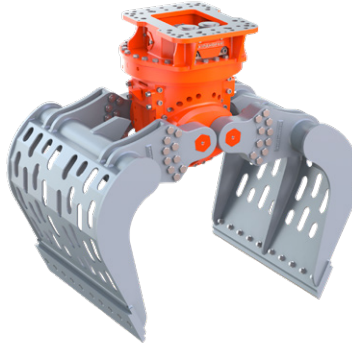
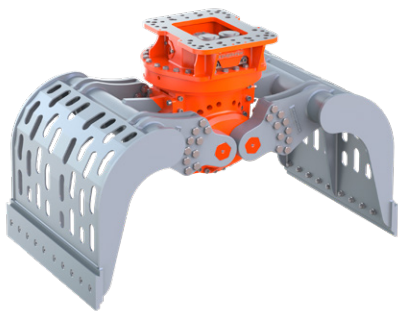
OPEN SHELLS:



HALF OPEN SHELLS:



CLOSED SHELLS:



CLOSING FORCE CURVE – Note: closing forces refer to an operating pressure of 26 MPa (260 bar).
At an oil flow of 50 l/min the cycle time open/close is 1,9 sec.



Robust universal grab with *HPXdrive* for excavators with up to 37t operating weight. Well-suited for demolition and separation of all kinds of building materials and waste,

► ***HPXdrive* – the revolutionary concept for hydraulically operated grabs!**

The rotation of the arms of the grab is generated by two hollow shafts, which run opposed and have a helix thread, hydraulically driven by a single piston. **No hydraulic cylinder required.**

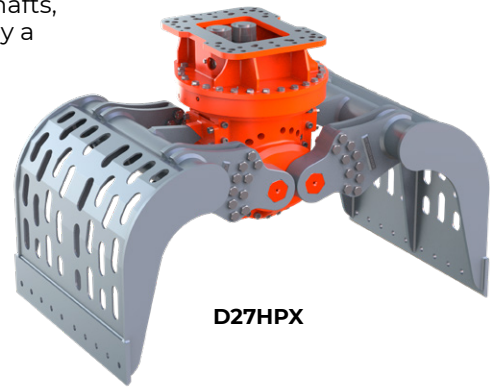
► **50% longer life cycle.** The drive unit runs in a permanent oil bath – no lubrication necessary. Resistant against dirt and blows due to the compact design.

► **Constant closing forces** during the entire opening and closing process.

► With **integrated rotation:** Swivel and bevel sealed. Rotary feedthrough and motor accessible directly.
Also as **version with integrated OQ-adapter.**

► **Integrated pressure relief valve** to avoid peak-pressures.

► The grabs feature **perforated shells** to let fine dust and debris through without larger pieces getting caught. The **durable, replaceable and indexable wear blades** (500HB) enable the grabs to pinch with their edges without excessive wear.



D27HPX

Demolition and Sorting Grab with *HPXdrive* D27HPX / D32HPX / D37HPX

Type	Width E (mm)	Opening A (mm)	Height C max. (mm)	Height C min. (mm)	Volume (liter)	Weight (kg)	Load capacity (kg)	Closing force (kN)	Operating weight (t)
D27HPX-120	1200	2000	1900	1320	890	2100	9000	79	20 – 27
D32HPX-120	1200	2150	1880	1420	955	2115	9000	72	25 – 32
D37HPX-125	1250	2250	1930	1420	1100	2300	9000	69	32 – 37

Package consists of: demolition and sorting grab, integrated rotation, wear blades and non-return valve

Demolition and Sorting Grab with *HPXdrive* and OQ-adapter D27HPX / D32HPX / D37HPX

Type	Width E (mm)	Opening A (mm)	Height C max. (mm)	Height C min. (mm)	Volume (liter)	Weight (kg)	Load capacity (kg)	Closing force (kN)	Operating weight (t)
D27HPX-OQ70/55	1200	2000	1925	1460	890	2395	9000	79	20 – 27
D32HPX-OQ70/55	1200	2150	2045	1585	955	2435	9000	72	25 – 32
D32HPX-OQ80	1200	2150	2045	1585	955	2435	9000	72	25 – 32
D37HPX-OQ80	1250	2250	2045	1585	1100	2490	9000	69	32 – 37

Package consists of: demolition and sorting grab, integrated rotation with OQ-adapter, wear blades and non-return valve

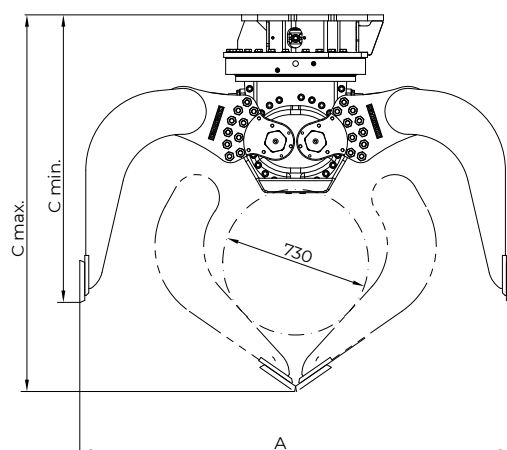
Accessories

Type	Description
KM 690 27t	adapter for rigid mounting – up to 27t
KM 690 32t	adapter for rigid mounting – up to 32t
KM 690 40t	adapter for rigid mounting – up to 40t
KSW21/25 rigid	bolt-on-adapter for system L-Lock KMS21/25L / KHS21/25L – up to 40t
	adapters for quick change systems from other manufacturers or different sizes available on request

Requirements of carrier machine

Operating pressure (open/close):	max. 35 MPa (350 bar)
Pump capacity (open/close):	100 - 300 l/min
Operating pressure (rotate):	max. 25 MPa (250 bar)
Pump capacity (rotate):	D27: 40 l/min / D32-D37: 40 - max. 60 l/min
Cycle times @ 200 l/min (open/close):	1,2/1,2 sec.

Technical drawings



D32HPX

